

COMPUTER HUB for Multi-Detector Systems

Model Series - FM-9HUB-2, FM-9HUB-10, FM-9HUB-MULTI

FEATURES:

- ❖ COMPUTING ENGINE FOR MULTIPLE INSTRUMENTS AND SYSTEMS.
- ❖ POWERS CHANNELS FOR MULTIPLE INSTRUMENTS: AIR, WATER, AREA, VEHICLE, AND PERSONNEL.
- ❖ CONTINUOUS, REAL-TIME, RUGGED DUTY.
- ❖ INCLUDES COMPUTER AND COLOR MONITOR.
- ❖ EASY INTEGRATION TO FACILITY MAINFRAME IF DESIRED.



APPLICATION:

Use in facilities requiring diverse monitor/system applications integrated into a single computer.

DESCRIPTION:

The **FM-9HUB** is the computing engine that powers many of TA's multi-channel radiation in air, and water monitors as well as area, vehicular and personnel monitors and systems.

Like all of the **FM-9HUB** series, these are continuous duty, rugged wall or rack mounted systems. Electronics include computer with COLOR LCD Monitor. Electronics are plug-in modules allowing quick change or addition of function as needed; allowing rapid repair by substitution of modules in the field. The modular system is covered by T/A's unique modular warranty, in addition to the full one-year warranty covering all T/A products.

Various systems are based on the **FM-9HUB**. All cabling, connectors, and software in place ready to operate. The standard unit is operated from 115 V single phase, 60 Hz; 220V optional, 50 or 60 Hz.



**TECHNICAL ASSOCIATES
OVERHOFF TECHNOLOGY**

7051 Eton Ave., Canoga Park, CA 91303
818-883-7043 (Phone) 818-883-6103 (Fax)

tagold@nwc.net

WWW.TECH-ASSOCIATES.COM

Divisions of  US NUCLEAR CORP

COMPUTER HUB for Multi-Detector Systems

Model Series - FM-9HUB-2, FM-9HUB-10, FM-9HUB-MULTI

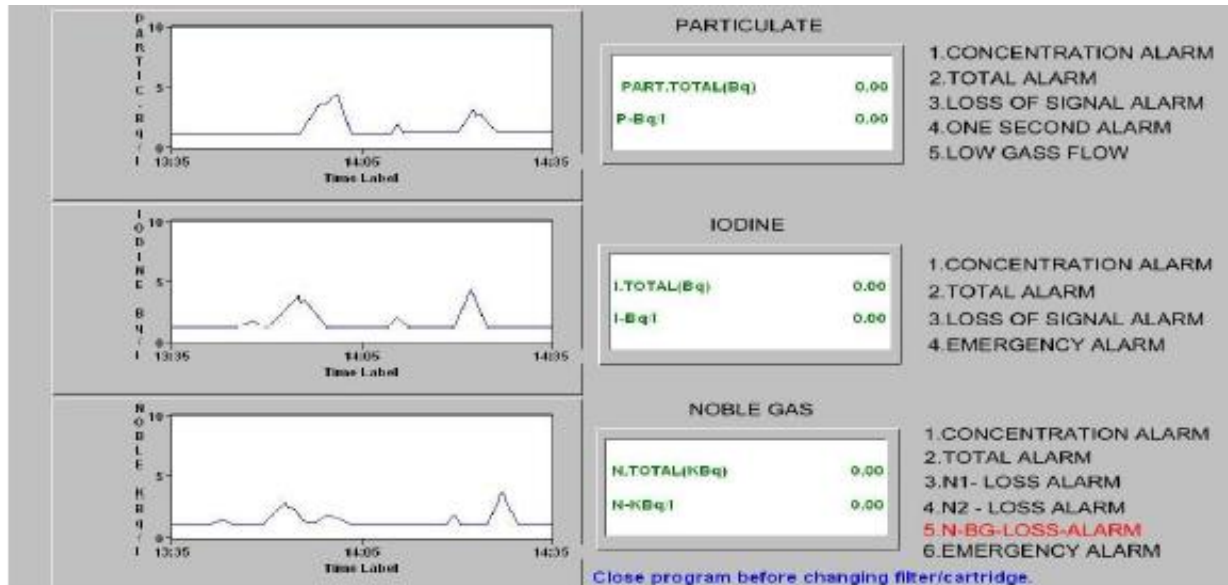
SPECIFICATIONS:

	FM-9HUB-2	FM-9HUB-10	FM-9HUB-MULTI
Channels	Two Channel Monitors	Three to Ten Channel Monitors	More than Ten Channel Monitors
Application Use	1 – Doorway, Hand, Shoe Monitors 2 – Air Monitors	1 – Water Monitors 2 – Air Monitors 3 – Lab Monitor Networks	1 – Area Monitor Networks 2 – Perimeter Systems
Display	7" Color Monitor	17" Color Monitor	17" Color Monitor

Calibration: Follow on-screen instructions for user-assisted automatic calibration.
Display Mode: Model **FM-9HUB** features an advanced Processor Computer with a Color LCD Monitor. Direct readout in desired radiation units Bq/l or other units such as KBq or Curies, etc.

OPERATION

Example: When **FM-9HUB-MULTI** continuous air monitor is in normal operation, the Color LCD Monitor displays:



**TECHNICAL ASSOCIATES
OVERHOFF TECHNOLOGY**

7051 Eton Ave., Canoga Park, CA 91303
818-883-7043 (Phone) 818-883-6103 (Fax)

tagold@nwc.net

WWW.TECH-ASSOCIATES.COM

Divisions of  US NUCLEAR CORP

COMPUTER HUB for Multi-Detector Systems

Model Series - FM-9HUB-2, FM-9HUB-10, FM-9HUB-MULTI

- High Voltage Supply:** Separately variable from 0 to 2000. Extremely stable HV.
- LCD Color Monitor:** Monitor shows both real time concentration and accumulated dose for all channels. Data is shown both graphically and numerically.
- Accuracy:** +/- 10% except for resolution loss and statistical variation.
- Alarms:** Alarms are pre-settable by user to any trigger level.
- ❖ **Low level Alarm:** Automatic Reset
 - ❖ **High Level Alarm:** High level alarm remains activated until RESET button is pushed.
 - ❖ **Visual Alarm:** On-screen alarms and warnings. Red-high level, Amber-Low count for each channel
 - ❖ **Audio Alarm:** 1000 Hz, greater than 80db.
- Outputs:**
1. Logic Level Signals
 2. Contact Closure or Opening
 3. Ethernet LAN Connection
 4. USB ports

STANDARD BUILT-IN MODULES SERIES – ALL SOLID STATE:

- 1 ea Digital Acquisition Board
- 1 ea MGA-5202 with amplifiers including fully adjustable single channel analyzer w/ independent high voltage power supply for scintillation detector.
- 1 ea MV-5-12 Power Supply Module – 5 volt and 12 volt. Once the high voltage levels are set by the technician, they do not change.
- 1 ea MAL-Built-in Alarm Module

ELECTRONIC SYSTEM DESCRIPTION :

1. CPU with data acquisition
2. High Resolution, LCD Color Monitor Display
3. Use plug-in Mouse
4. Graphic Printer for hard copy on some models
5. USB HUB (4 ports)
6. Use plug-in Keyboard
7. 2 SD Cards, 2 gigabyte per card
8. Non-volatile 1 year data storage. Data is stored every 2 minutes- all year
9. Specialized **Overhoff Overview Radiation Monitor software** custom tuned and designed for the FM-9HUB
10. Ethernet- LAN and USB ports



TECHNICAL ASSOCIATES OVERHOFF TECHNOLOGY

7051 Eton Ave., Canoga Park, CA 91303
818-883-7043 (Phone) 818-883-6103 (Fax)

tagold@nwc.net

WWW.TECH-ASSOCIATES.COM

Divisions of  US NUCLEAR CORP

COMPUTER HUB for Multi-Detector Systems

Model Series - FM-9HUB-2, FM-9HUB-10, FM-9HUB-MULTI

11.

OPTIONAL:

SPECIAL HARDWARE//SOFTWARE UPGRADES AVAILABLE (NOT AVAILABLE ON ALL MODELS)

- ❖ 4-20mA output signals – 3 channels
- ❖ Big 17" Color LCD Monitor
- ❖ OVERHOFF Overview Virtual Instrument Software
- ❖ Touch-screen feature on the LCD color monitor



TECHNICAL ASSOCIATES OVERHOFF TECHNOLOGY

7051 Eton Ave., Canoga Park, CA 91303
818-883-7043 (Phone) 818-883-6103 (Fax)

tagold@nwc.net

WWW.TECH-ASSOCIATES.COM

Divisions of



US NUCLEAR CORP