

COMPUTER HUB for Multi-Detector Systems

计算机网络多探头系统

Model Series - FM-9HUB-2, FM-9HUB-10, FM-9HUB-MULTI

FEATURES: 特点

- ❖ COMPUTING ENGINE FOR MULTIPLE INSTRUMENTS AND SYSTEMS.
- ❖ 多种仪器和系统计算机联网
- ❖ POWERS CHANNELS FOR MULTIPLE INSTRUMENTS: AIR, WATER, AREA, VEHICLE, AND PERSONNEL.
- ❖ 包括空气, 水, 区域, 车辆, 人员
- ❖ CONTINUOUS, REAL-TIME, RUGGED DUTY.
- ❖ 连续、实时、坚固
- ❖ INCLUDES COMPUTER AND COLOR MONITOR.
- ❖ 包括电脑和彩屏
- ❖ EASY INTEGRATION TO FACILITY MAINFRAME IF DESIRED.
- ❖ 如需要, 很容易与中央主机兼容



APPLICATION: 应用

Use in facilities requiring diverse monitor/system applications integrated into a single computer.
应用于要求使用多台监测器/系统集成到一台电脑的环境下

DESCRIPTION: 描述

The **FM-9HUB** is the computing engine that powers many of TA's multi-channel radiation in air, and water monitors as well as area, vehicular and personnel monitors and systems.

FM-9HUB计算机联网系统, 许多TA公司多道空气、水及区域监测器, 车辆及人员辐射监测器和系统电脑联网

Like all of the **FM-9HUB** series, these are continuous duty, rugged wall or rack mounted systems. Electronics include computer with COLOR LCD Monitor. Electronics are plug-in modules allowing quick change or addition of function as needed; allowing rapid repair by substitution of modules in the field. The modular system is covered by T/A's unique modular warranty, in addition to the full one-year warranty covering all T/A products.

FM-9HUB 系列为连续工作坚固壁装或架装系统, 电子学包括彩屏 LCD 电脑, 电子学为插卡式模块允许快速更换或功能添加, 允许现场通过更换模块进行快速维修; 此模块系统在 TA 公司特别模块质保范围内, 外加一整年保修。



OVERHOFF TECHNOLOGY

7051 Eton Ave., Canoga Park, CA 91303
818-883-7043 (Phone) 818-883-6103 (Fax)

tagold@nwc.net

WWW.TECH-ASSOCIATES.COM

COMPUTER HUB for Multi-Detector Systems

计算机网络多探头系统

Various systems are based on the **FM-9HUB**. All cabling, connectors, and software in place ready to operate. The standard unit is operated from 115 V single phase, 60 Hz; 220V optional, 50 or 60 Hz.

以 FM-9HUB 为基础的各种系统，所有数据线、连接件和软件等准备就绪，标准供电 115V 单相，可选 60 Hz; 220V. 50 或 60 Hz.

SPECIFICATIONS: 规格

	FM-9HUB-2	FM-9HUB-10	FM-9HUB-MULTI
Channels 通道	Two Channel Monitors 两道监测器	Three to Ten Channel Monitors 3-10 道监测器	More than Ten Channel Monitors 10 道以上监测器
Application ~~~~~ Use 应用	1 – Doorway, Hand, Shoe Monitors 门口、手、鞋监测器 2 – Air Monitors 空气监测器	1 – Water Monitors 水监测器 2 – Air Monitors 空气监测器 3 – Lab Monitor Networks 实验室监测网	1 – Area Monitor Networks 区域监测网 2 – Perimeter Systems 边界系统
Display 显示	7" Color Monitor 7 寸彩屏	17" Color Monitor	17" Color Monitor

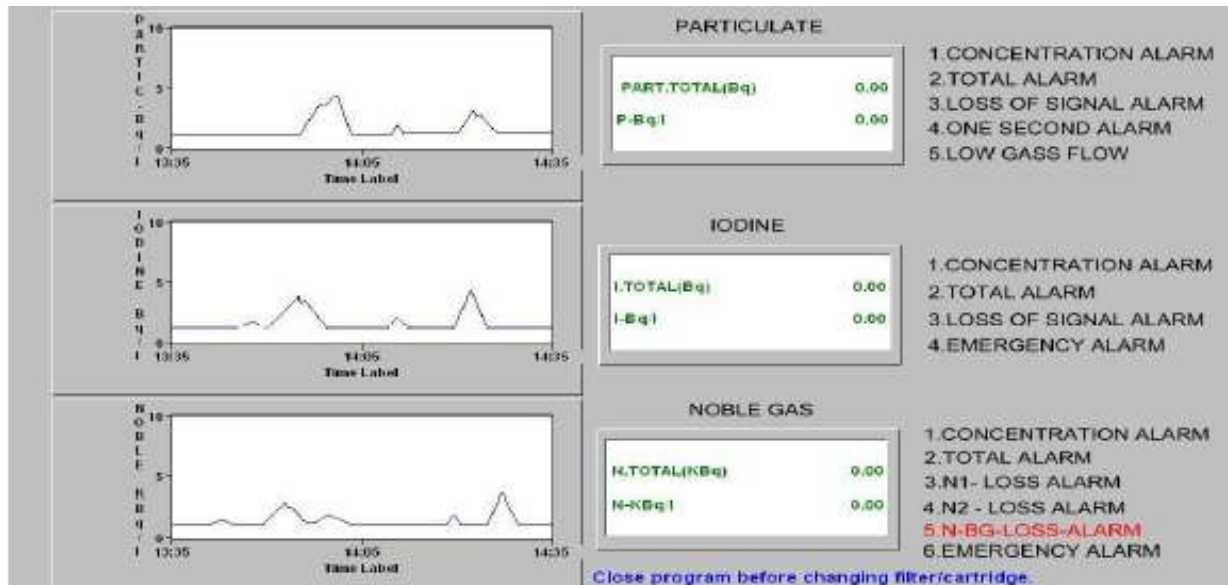
Calibration: Follow on-screen instructions for user-assisted automatic calibration.

Display Mode: Model **FM-9HUB** features an advanced Processor Computer with a Color LCD Monitor. Direct readout in desired radiation units Bq/l or other units such as KBq or Curies, etc.

OPERATION 选项

Example: When **FM-9HUB-MULTI** continuous air monitor is in normal operation, the Color LCD Monitor displays:

例：FM-9HUB-MULTI连续监测器正常操作下彩屏LCD显示如下：



COMPUTER HUB for Multi-Detector Systems

计算机网络多探头系统

Model Series - FM-9HUB-2, FM-9HUB-10, FM-9HUB-MULTI

High Voltage Supply:	Separately variable from 0 to 2000. Extremely stable HV.
高压电源:	独立变量0-2000, 极其稳定的高压
LCD Color Monitor:	Monitor shows both real time concentration and accumulated dose for all channels. Data is shown both graphically and numerically.
LCD彩显:	显示实时浓度和全通道累计剂量
Accuracy:	+/- 10% except for resolution loss and statistical variation.
精度:	+/- 10%, 不含分辨率损失和统计变差
Alarms:	Alarms are pre-settable by user to any trigger level.
报警:	用户设定任何报警点
❖ Low level Alarm:	Automatic Reset
❖ 低限报警:	自动重设
❖ High Level Alarm:	High level alarm remains activated until RESET button is pushed.
❖ 高限报警:	重设前持续激活
❖ Visual Alarm:	On-screen alarms and warnings. Red-high level, Amber-Low count for each channel
❖ 视觉报警:	屏显报警和警告, 红灯-高限, 琥珀色-任何通道低计数
❖ Audio Alarm:	1000 Hz, greater than 80db.
❖ 声音报警:	1000赫兹, 优于80db
Outputs:	输出
	1. Logic Level Signals 逻辑电平信号
	2. Contact Closure or Opening 继电器闭合
	3. Ethernet LAN Connection 以太网LAN连接
	4. USB ports USB接口

STANDARD BUILT-IN MODULES SERIES

标准内置模块系列

1 ea	Digital Acquisition Board 一块数字采集卡
1 ea	MGA-5202 with amplifiers including fully adjustable single channel analyzer w/ independent high voltage power supply for scintillation detector. 一块MGA-5202带放大器, 包括可调节单道分析仪, 带独立高压电源用于闪烁探测器
1 ea	MV-5-12 Power Supply Module – 5 volt and 12 volt. Once the high voltage levels are set by the technician, they do not change.



TECHNICAL ASSOCIATES

OVERHOFF TECHNOLOGY

7051 Eton Ave., Canoga Park, CA 91303
818-883-7043 (Phone) 818-883-6103 (Fax)

tagold@nwc.net

WWW.TECH-ASSOCIATES.COM

Divisions of  US NUCLEAR CORP

COMPUTER HUB for Multi-Detector Systems

计算机网络多探头系统

Model Series - FM-9HUB-2, FM-9HUB-10, FM-9HUB-MULTI

一个MV-5-12电源模块-5V和12V

技术人员一旦设定高压值则不能变动

1 ea

MAL-Built-in Alarm Module

一块内置报警模块

ELECTRONIC SYSTEM DESCRIPTION: 电子学系统描述

1. CPU with data acquisition
CPU带数据采集
2. High Resolution, LCD Color Monitor Display
高分辨率, LCD彩屏显示
3. Use plug-in Mouse
有线鼠标
4. Graphic Printer for hard copy on some models
一些型号带图形打印机用于硬拷贝
5. USB HUB (4 ports)
USB接口
6. Use plug-in Keyboard
插线式键盘
7. 2 SD Cards, 2 gigabyte per card
2个SD存储卡, 每个2G容量
8. Non-volatile 1 year data storage. Data is stored every 2 minutes- all year
1年永久数据存储, 数据每两分钟存储-全年
9. Specialized **Overhoff Overview Radiation Monitor software** custom tuned and designed for the FM-9HUB
专用Overhoff Overview监测软件, FM-9HUB专用设计
10. Ethernet- LAN and USB ports
以太网-LAN和USB接口

OPTIONAL: 选购

SPECIAL HARDWARE//SOFTWARE UPGRADES AVAILABLE (NOT AVAILABLE ON ALL MODELS)

专用硬件/软件, 可升级

- ❖ 4-20mA output signals – 3 channels
- ❖ 输出信号4-20mA-3通道



TECHNICAL ASSOCIATES

OVERHOFF TECHNOLOGY

7051 Eton Ave., Canoga Park, CA 91303

818-883-7043 (Phone) 818-883-6103 (Fax)

tagold@nwc.net

WWW.TECH-ASSOCIATES.COM

Divisions of



US NUCLEAR CORP

COMPUTER HUB for Multi-Detector Systems

计算机网络多探头系统

Model Series - FM-9HUB-2, FM-9HUB-10, FM-9HUB-MULTI

- ❖ Big 17" Color LCD Monitor
- ❖ 大屏幕彩屏LCD显示器
- ❖ OVERHOFF Overview Virtual Instrument Software
- ❖ OOV模拟仪器软件
- ❖ Touch-screen feature on the LCD color monitor
- ❖ 触摸屏LCD彩色显示器



TECHNICAL ASSOCIATES

OVERHOFF TECHNOLOGY

7051 Eton Ave., Canoga Park, CA 91303

818-883-7043 (Phone) 818-883-6103 (Fax)

tagold@nwc.net

WWW.TECH-ASSOCIATES.COM

Divisions of



US NUCLEAR CORP